

DESCRIPTION OF SURVEY
FOR
REGINA LAREE CONSTABLE
TAX MAP 326 PARCEL 44

A CERTAIN TRACT OR PARCEL OF LAND SITUATED NEAR STATE ROUTE 98, HARRISON COUNTY, WEST VIRGINIA BEING MORE PARTICULARLY BOUND AND DESCRIBED AS FOLLOWS:

Beginning at a 5/8" rebar with cap set at a corner common to Equitable Gas Company (Tax Map 326 Parcel 84.1, Deed Book 921 Page 494) and Leonard J. Haddix (Tax Map 326 Parcel 44.10, Deed Book 1318 Page 970) which bears, South 57 Degrees 20 Minutes 13 Seconds West, a distance of 165.49 feet from an iron rebar in concrete found at a corner common to said Haddix (Par 44.10) and Alice F. and Richard K. Wildman (Tax Map 326 Parcel 44.6, Deed Book 1220 Page 440);

Thence, leaving said Equitable Gas Company (Par 84.1) and with said Haddix (Par 44.10) for two (2) lines, South 48 Degrees 56 Minutes 36 Seconds East, a distance of 121.46 feet to an iron rebar found;

Thence, North 29 Degrees 25 Minutes 12 Seconds East, a distance of 146.36 feet to an iron rebar found;

Thence, partially with said Haddix (Par 44.10) and partially with said Wildman (Par 44.6) and through existing forty (40) foot right-of-way (Cedar Heights), North 67 Degrees 49 Minutes 52 Seconds East, a distance of 123.41 feet to a 5/8" rebar with cap set on the easterly right-of-way of said Cedar Heights and at a corner common to Bobbie C. Keith (Tax Map 326 Parcel 44.4, Deed Book 1384 Page 1271);

Thence, with said Cedar Heights and said Keith (Par 44.4), South 32 Degrees 21 Minutes 09 Seconds East, a distance of 163.83 feet to a 5/8" rebar with cap set on a line common to Ferrell Family Partnership United Welding Inc. (Tax Map 326 Parcel 44.3, Deed Book 1247 Page 599) and said Cedar Heights;

Thence, through said right-of-way and with said Ferrell Family Partnership United Welding Inc. (Par 44.3), South 03 Degrees 39 Minutes 56 Seconds West, a distance of 9.82 feet to an iron rebar found;

Thence, partially through said Cedar Heights and with said Ferrell Family Partnership United Welding Inc. (Par 44.3), South 82 Degrees 51 Minutes 20 Seconds East, a distance of 139.07 feet to an iron rebar found at a corner common to said Ferrell Family Partnership United Welding Inc. (Par 44.3) and Henry C. and Margaret K. Tolley (Tax Map 327 Parcel 6.1, Deed Book 1012 Page 660) and Martha Lou Wanstreet (Tax Map 327 Parcel 06, Deed Book 1396 Page 275);

Thence, leaving said Ferrell Family Partnership United Welding Inc. (Par 44.3) and said Tolley (Par 6.1) and with said Wanstreet (Par 06) for three (3) lines; South 00 Degrees 25 Minutes 43 Seconds East, a distance of 176.16 feet to an iron rebar found;

Thence, South 10 Degrees 13 Minutes 43 Seconds East, a distance of 197.22 feet to a 5/8" rebar with cap set on the easterly right-of-way line of said Cedar Heights and at a corner common to said Wanstreet Par 06);

Thence, partially through said Cedar Heights and with said Wanstreet (Par 06), South 79 Degrees 37 Minutes 34 Seconds West, a distance of 33.04 feet to an iron rebar found at a corner common to said Wanstreet (Par 06) and John G. Post (Tax Map 326 Parcel 44.8, Deed Book 1394 Page 1216) and Jonathon E. Marks and Evan Cunningham (Tax Map 326 Parcel 44.12, Deed Book 1492 Page 700);

Thence, leaving said Wanstreet (Par 06) and Post (Par 44.8) and partially through said of Cedar Heights and with said Marks and Cunningham (Par 44.12) for three (3) lines, North 22 Degrees 00 Minutes 00 Seconds West, a distance of 108.30 feet to a point;

Thence, South 84 Degrees 38 Minutes 55 Seconds West, a distance of 51.66 feet to a point;

Thence, North 81 Degrees 36 Minutes 06 Seconds West, a distance of 36.81 feet to a point at a corner common to said Marks and Cunningham (Par 44.12) and the southerly side of a forty (40) foot right-of-way;

Thence, with said right-of-way and said Marks and Cunningham (Par 44.12) for twelve (12) lines; North 70 Degrees 14 Minutes 00 Seconds West, a distance of 33.72 feet to a point;

Thence, North 33 Degrees 53 Minutes 44 Seconds West, a distance of 27.05 feet to a point;

Thence, North 29 Degrees 56 Minutes 57 Seconds West, a distance of 33.90 feet to a point;

Thence, North 47 Degrees 15 Minutes 40 Seconds West, a distance of 25.19 feet to a point;

Thence, North 62 Degrees 21 Minutes 43 Seconds West, a distance of 31.96 feet to a point;

Thence, North 59 Degrees 03 Minutes 36 Seconds West, a distance of 34.03 feet to a point;

Thence, North 48 Degrees 27 Minutes 54 Seconds West, a distance of 88.58 feet to a point;

Thence, North 57 Degrees 27 Minutes 21 Seconds West, a distance of 55.94 feet to a point;

Thence, North 73 Degrees 23 Minutes 44 Seconds West, a distance of 39.68 feet to a point;

Thence, North 88 Degrees 34 Minutes 52 Seconds West, a distance of 34.19 feet to a point;

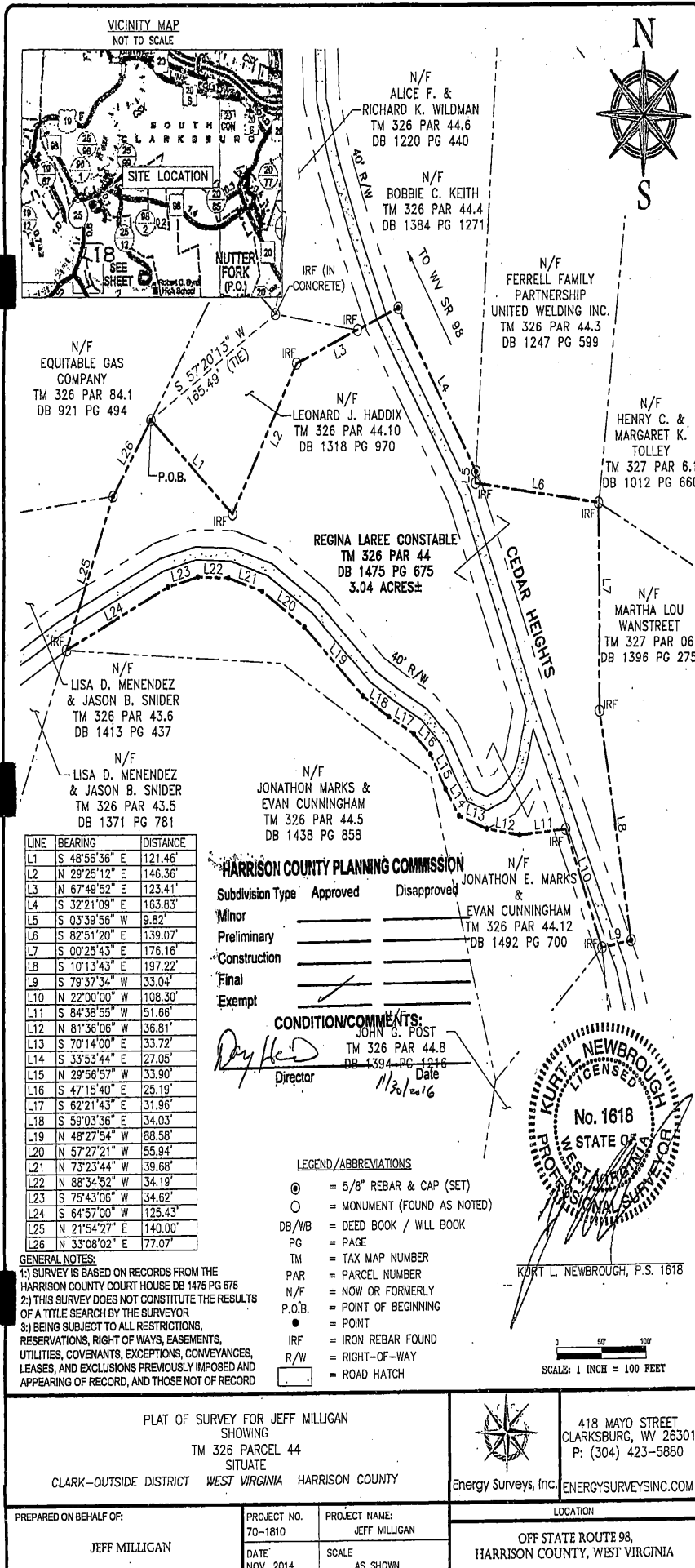
Thence, South 75 Degrees 43 Minutes 06 Seconds West, a distance of 34.62 feet to a point;

Thence, South 64 Degrees 57 Minutes 00 Seconds West, a distance of 125.43 feet to an iron rebar found at a corner common to said Marks and Cunningham (Par 44.12) and Jonathan Marks and Even Cunningham (Tax Map 326 Parcel 44.5, Deed Book 1438 Page 858) and Lisa D. Menendez and Jason B. Snider (Tax Map 326 Parcel 43.5, Deed Book 1371 Page 781) and Lisa D. Menendez and Jason B. Snider (Tax Map 326 Parcel 43.6, Deed Book 1413 Page 437);

Thence, leaving said Marks and Cunningham (Par 44.12) and said Marks and Cunningham (Par 44.5) and said Menendez and Snider (Par 43.5) and with said Menendez and Snider (Par 43.6); North 21 Degrees 54 Minutes 27 Seconds East, a distance of 140.00 feet to a 5/8" rebar with cap set at a corner common to said Menendez and Snider (Par 43.6) and said Equitable Gas Company (Par 84.1);

Thence, leaving said Menendez and Snider (Par 43.6) and with said Equitable Gas Company (Par 84.1), North 33 Degrees 08 Minutes 02 Seconds East, a distance of 77.07 feet to the **Place of Beginning**, containing 3.04 acres, MORE OR LESS, as shown on plat attached hereto and made part of this description.

The above-described parcel being part of the same tract of land conveyed to Regina Laree Constable in the deeds of record in the Office of the Clerk, Harrison County, West Virginia, Deed Book 1475 Page 675.



| LINE | BEARING | DISTANCE |
|------|---------------|----------|
| L1 | S 48°56'36" E | 121.46' |
| L2 | N 29°25'12" E | 146.36' |
| L3 | N 67°49'52" E | 123.41' |
| L4 | S 32°21'09" E | 163.83' |
| L5 | S 03°39'56" W | 9.82' |
| L6 | S 82°51'20" E | 139.07' |
| L7 | S 00°25'43" E | 176.16' |
| L8 | S 10°13'43" E | 197.22' |
| L9 | S 79°37'34" W | 33.04' |
| L10 | N 22°00'00" W | 108.30' |
| L11 | S 84°38'55" W | 51.66' |
| L12 | N 81°36'06" W | 36.81' |
| L13 | S 70°14'00" E | 33.72' |
| L14 | S 33°53'44" E | 27.05' |
| L15 | N 29°56'57" W | 33.90' |
| L16 | S 47°15'40" E | 25.19' |
| L17 | S 62°21'43" E | 31.96' |
| L18 | S 59°03'36" E | 34.03' |
| L19 | N 48°27'54" W | 88.58' |
| L20 | N 57°27'21" W | 55.94' |
| L21 | N 73°23'44" W | 39.68' |
| L22 | N 88°34'52" W | 34.19' |
| L23 | S 75°43'06" W | 34.62' |
| L24 | S 64°57'00" W | 125.43' |
| L25 | N 21°54'27" E | 140.00' |
| L26 | N 33°08'02" E | 77.07' |

